



— ITTI'S EXPERIENCE IN EC PROJECTS

EUTECHSOVEREIGNTY2025

KRZYSZTOF SAMP

Warsaw, May 26th, 2025

itti

ITTI Sp. z o.o.
www.itti.com.pl

ul. Rubież 46
61-612 Poznań

Tel. (61) 622 69 85
Fax. (61) 622 69 73

BASIC COMPANY INFORMATION

- ITTI – SME (ca. 75 people), **founded in 1996**, based in Poznan (Poland)
- **Software house and technological company** providing customised software solutions in three areas:
 - R&D projects: Technology demonstrators and prototypes (at TRL 5-7)
 - Space sector: Software for ground segment equipment and space safety (mainly for European Space Agency)
 - Commercial and public sectors: Dedicated IT applications (digitalisation of selected processes)
- **Awards:**
 - “**Cristal Brussels Prize**” 2006, 2010, 2013, 2018 and 2020 for the most active and successful Polish SME participating EC Framework Programmes
- **Membership in several clusters and associations:**
 - e.g. **IZTECH**, Public Safety Communications Europe, 6G-IA, Polish Space Industry Association, Wielkopolska ICT cluster



ITTI IN EC FP PROGRAMMES



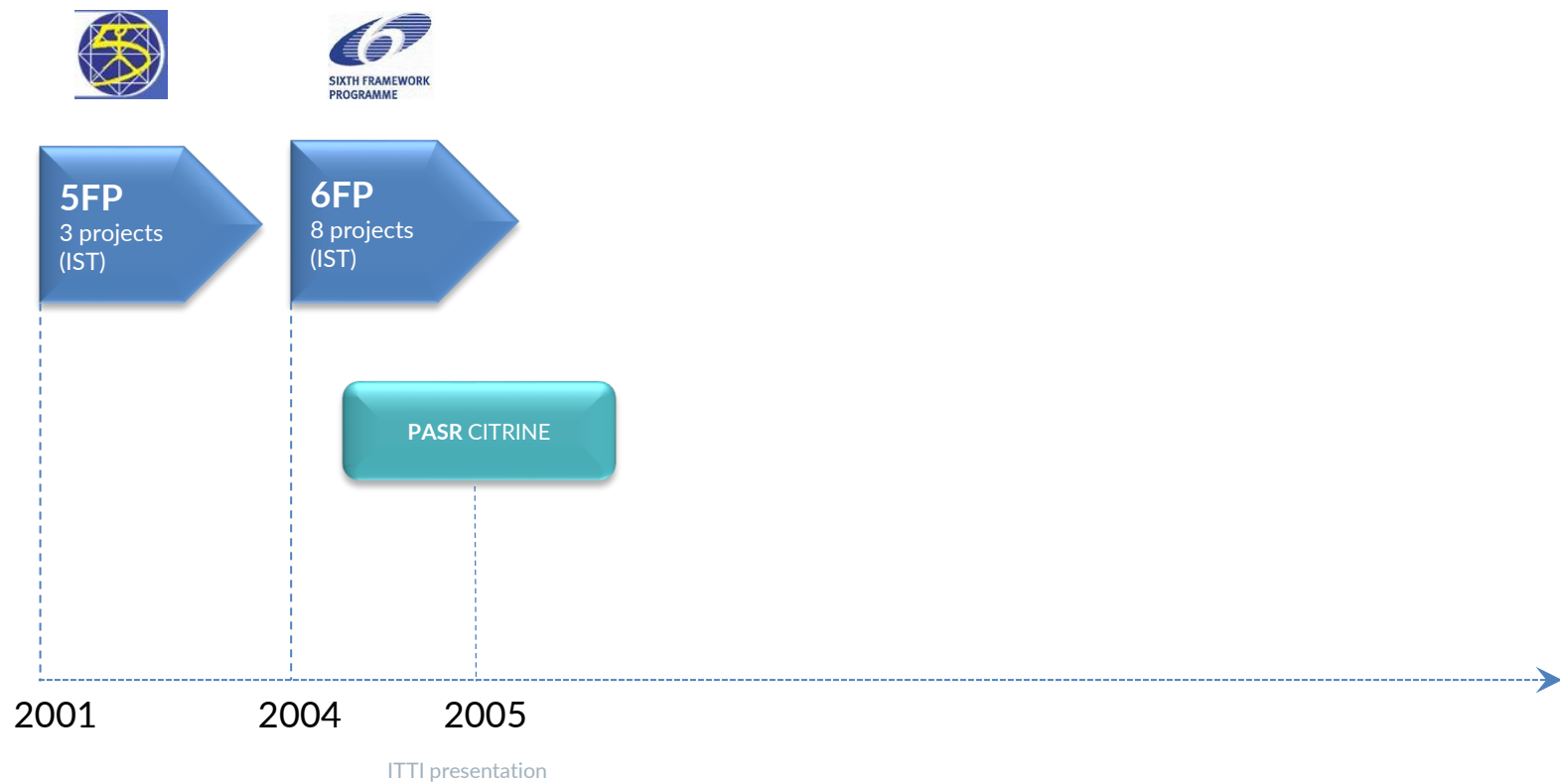
5FP

3 projects
(IST)

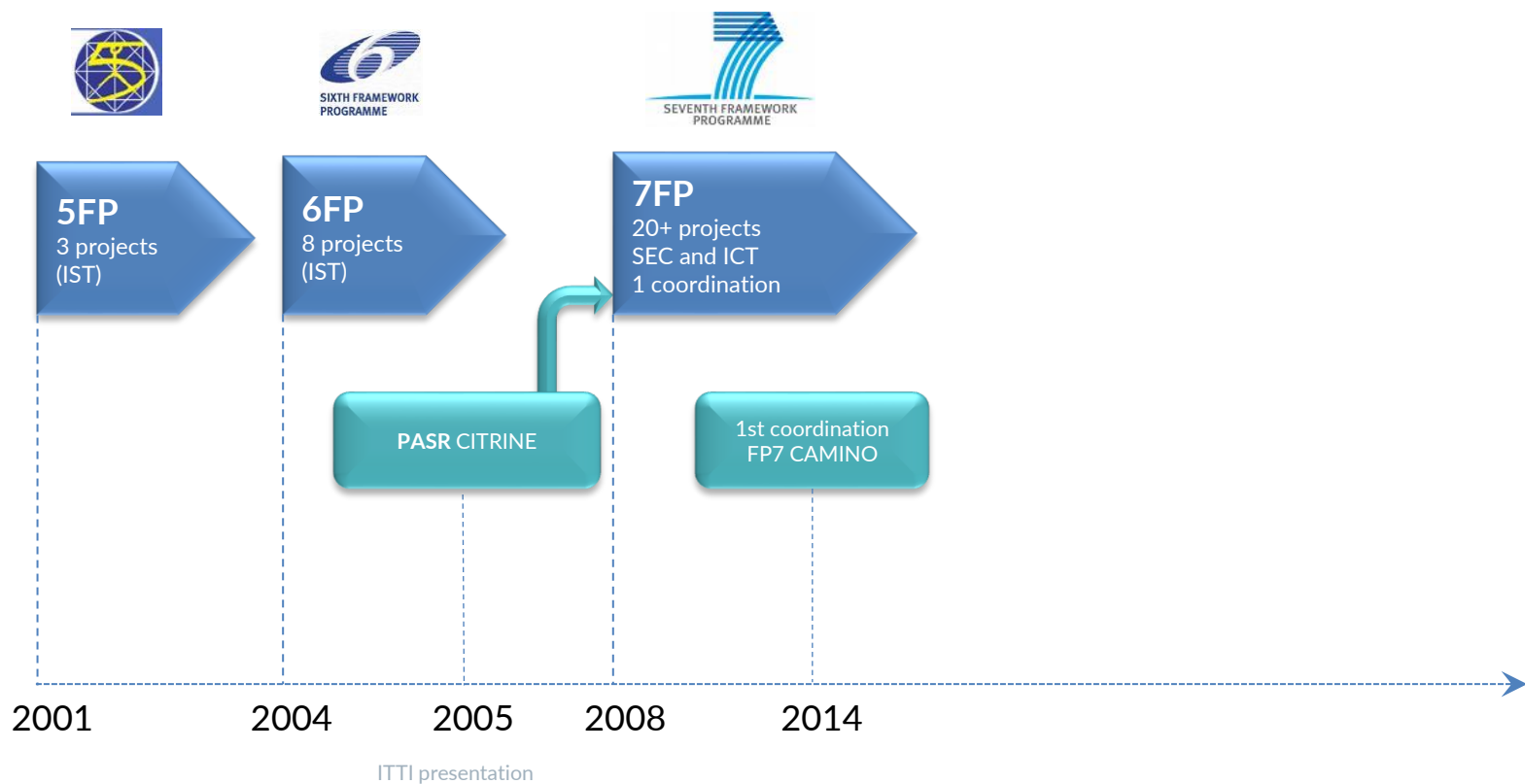
2001

ITTI presentation

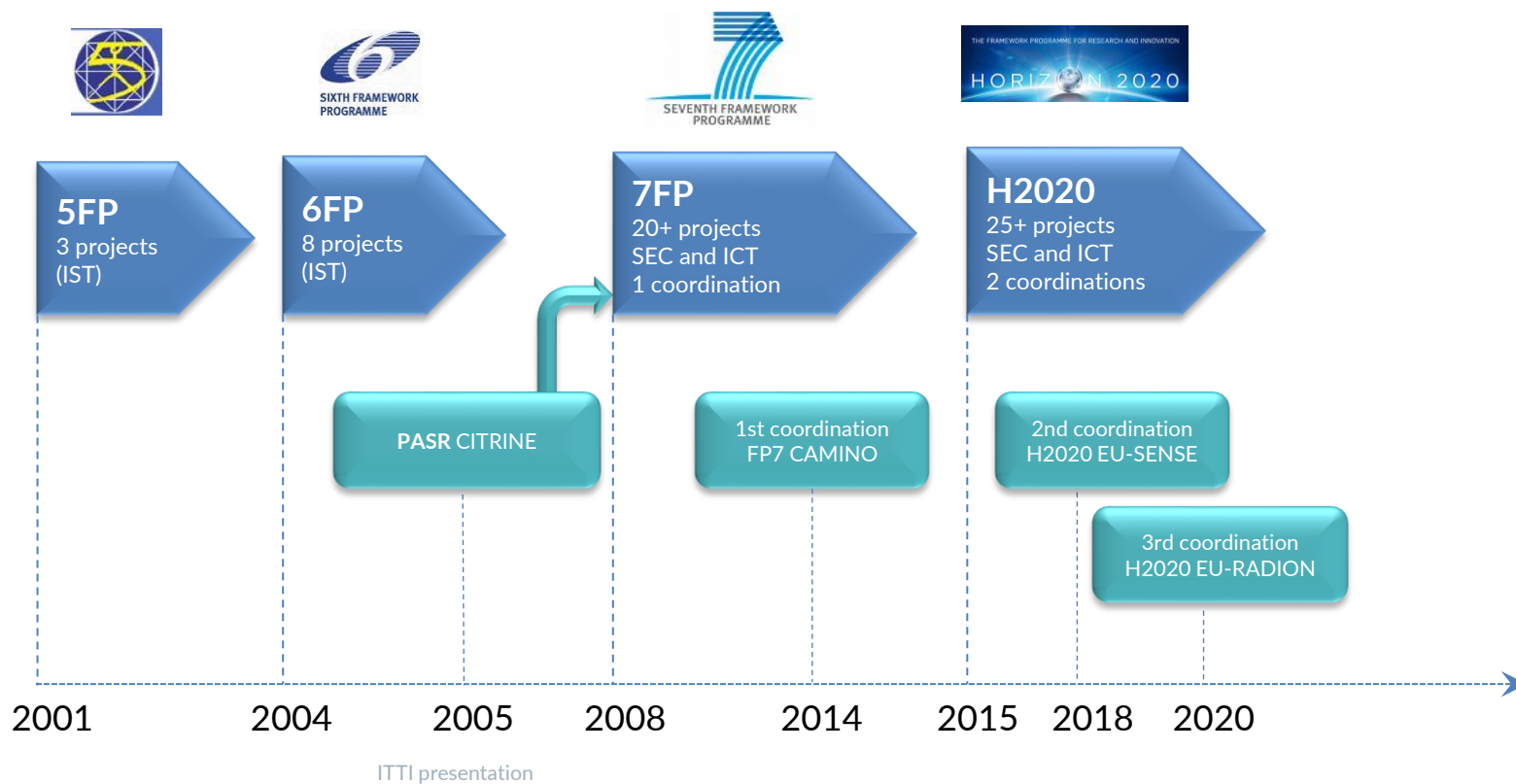
ITTI IN EC FP PROGRAMMES



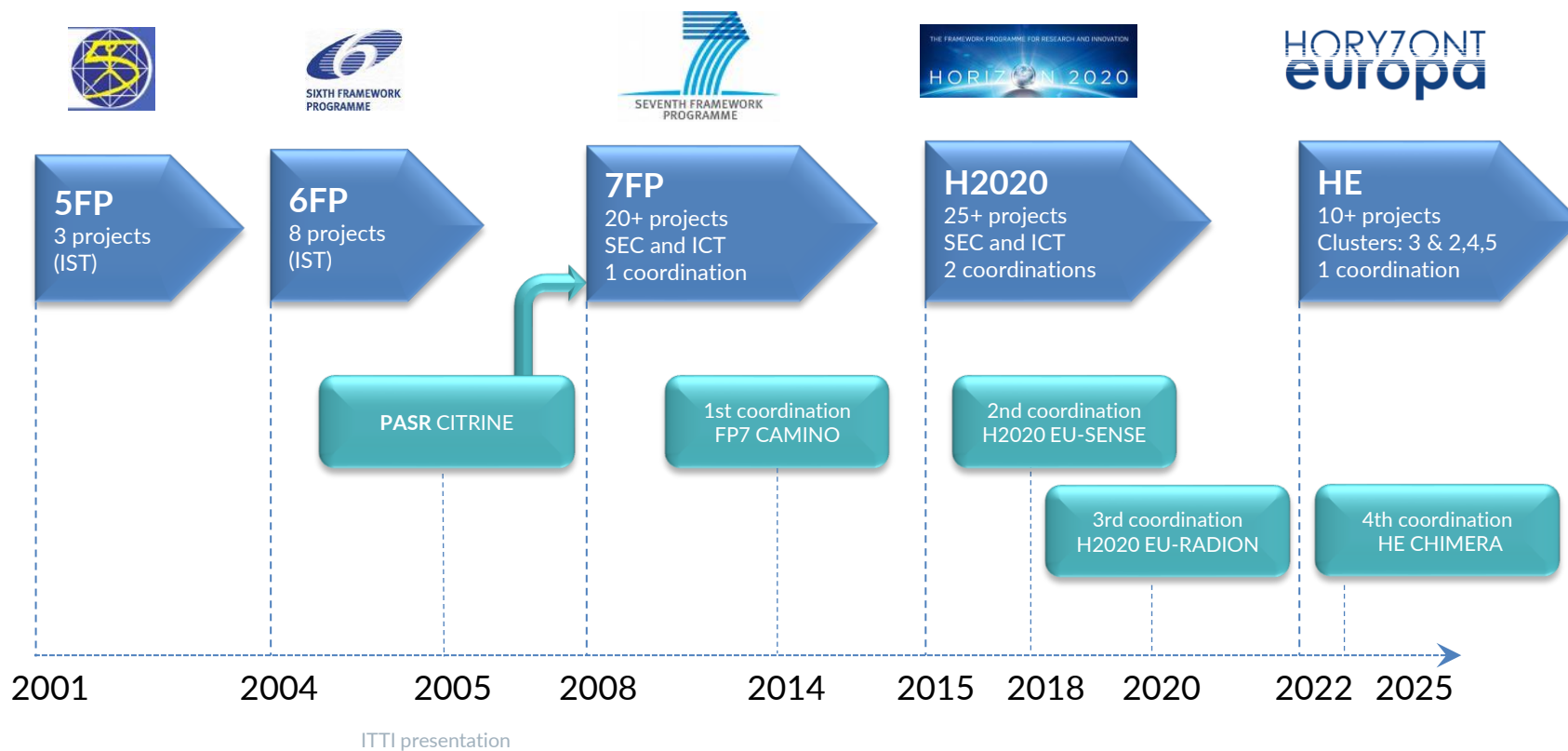
ITTI IN EC FP PROGRAMMES



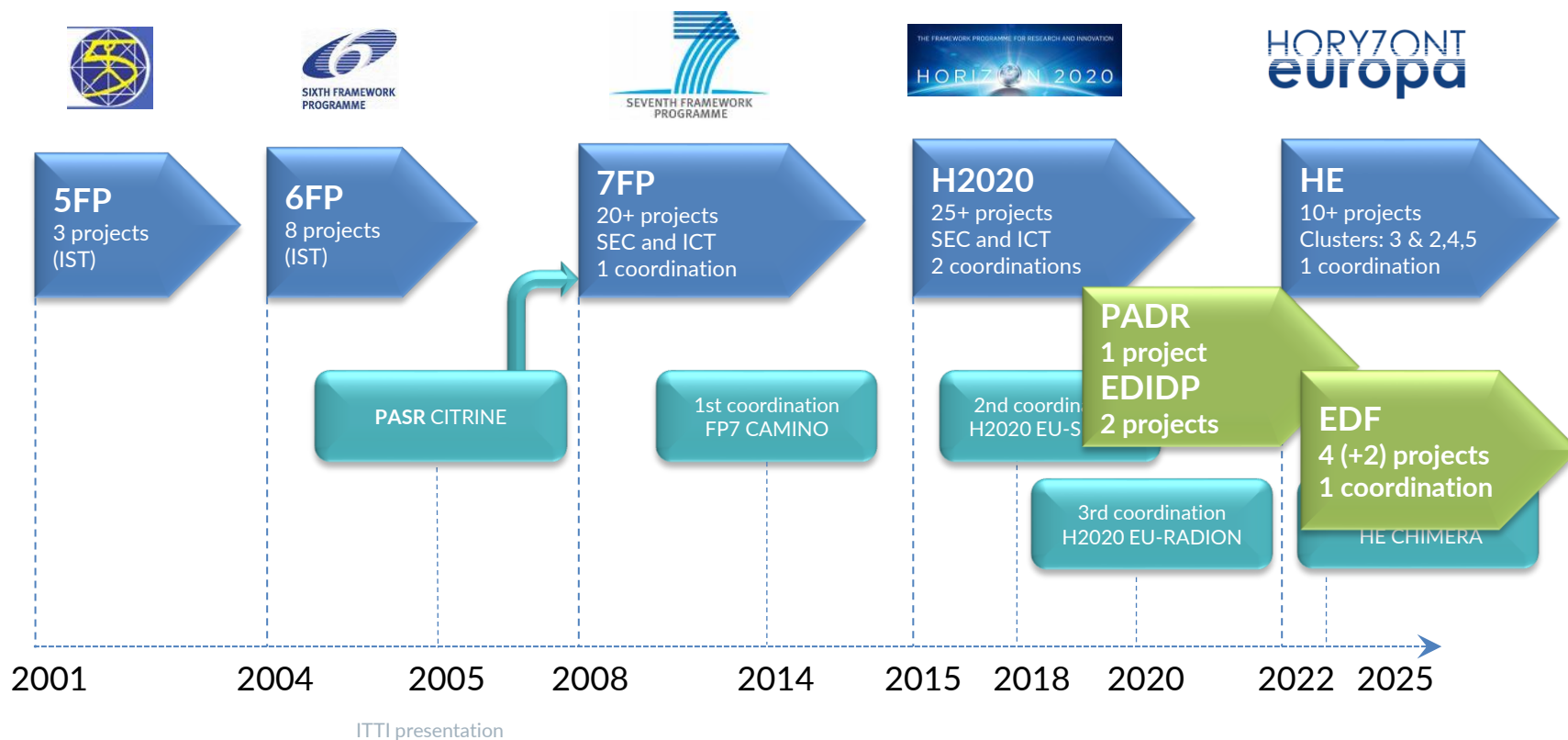
ITTI IN EC FP PROGRAMMES



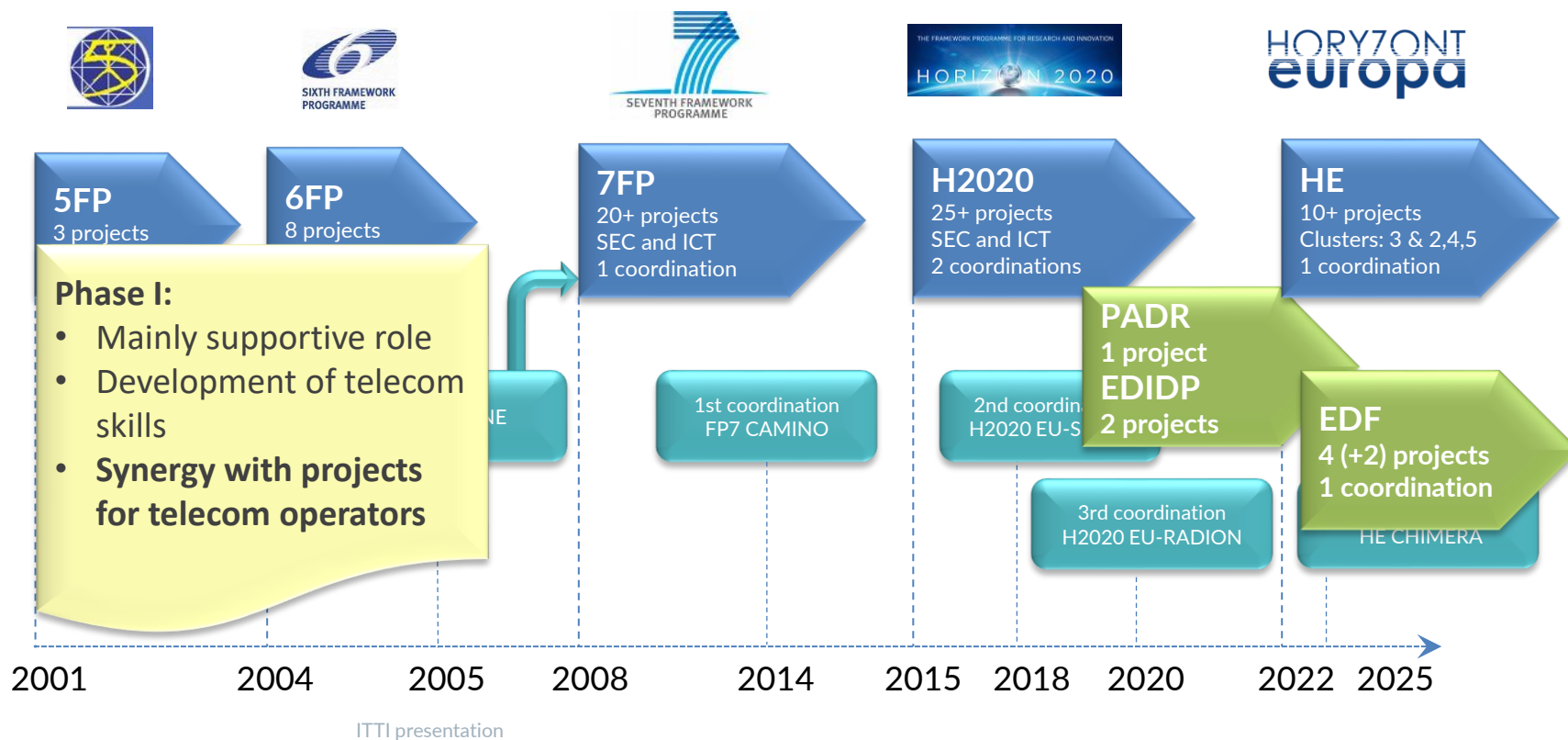
ITTI IN EC FP PROGRAMMES



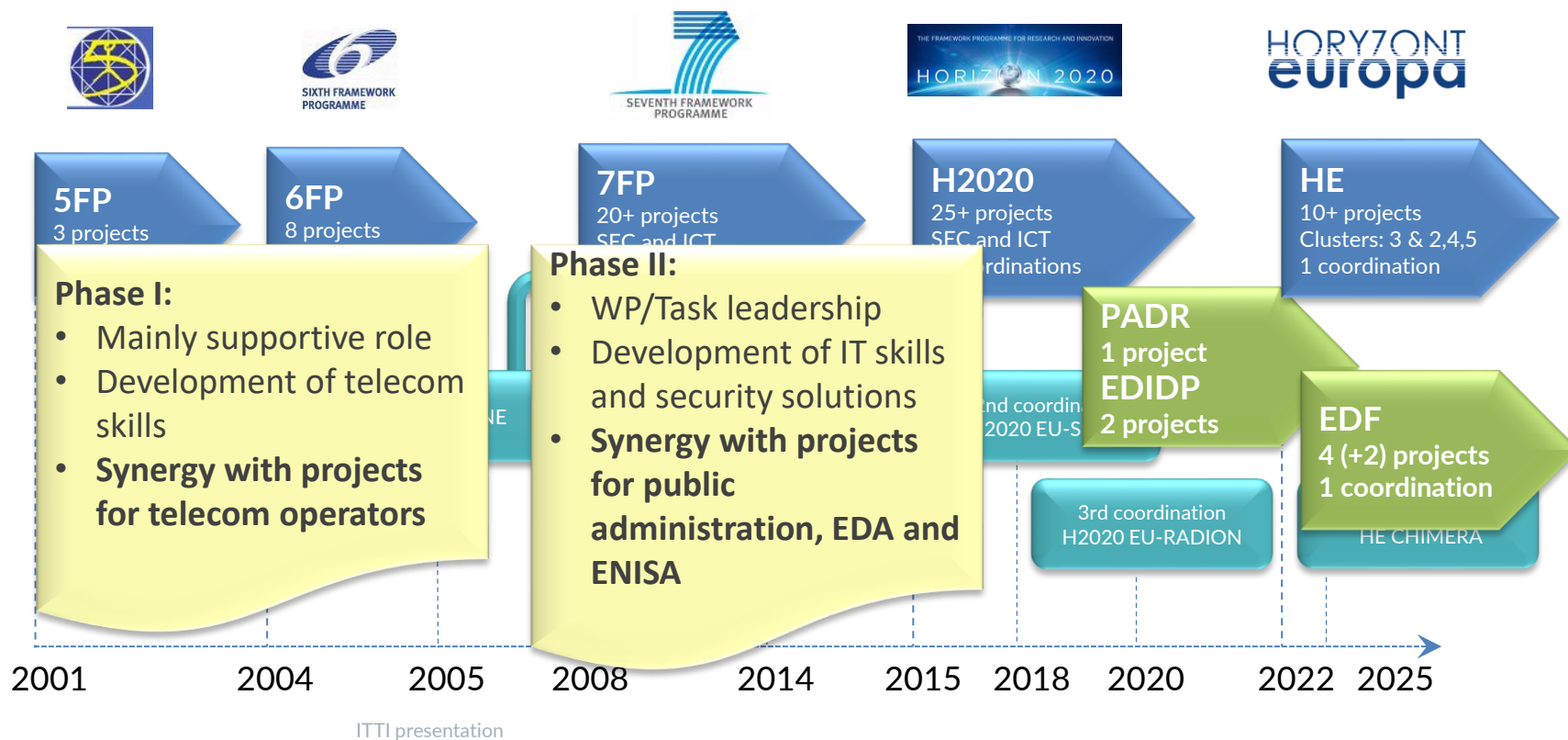
ITTI IN EC FP PROGRAMMES



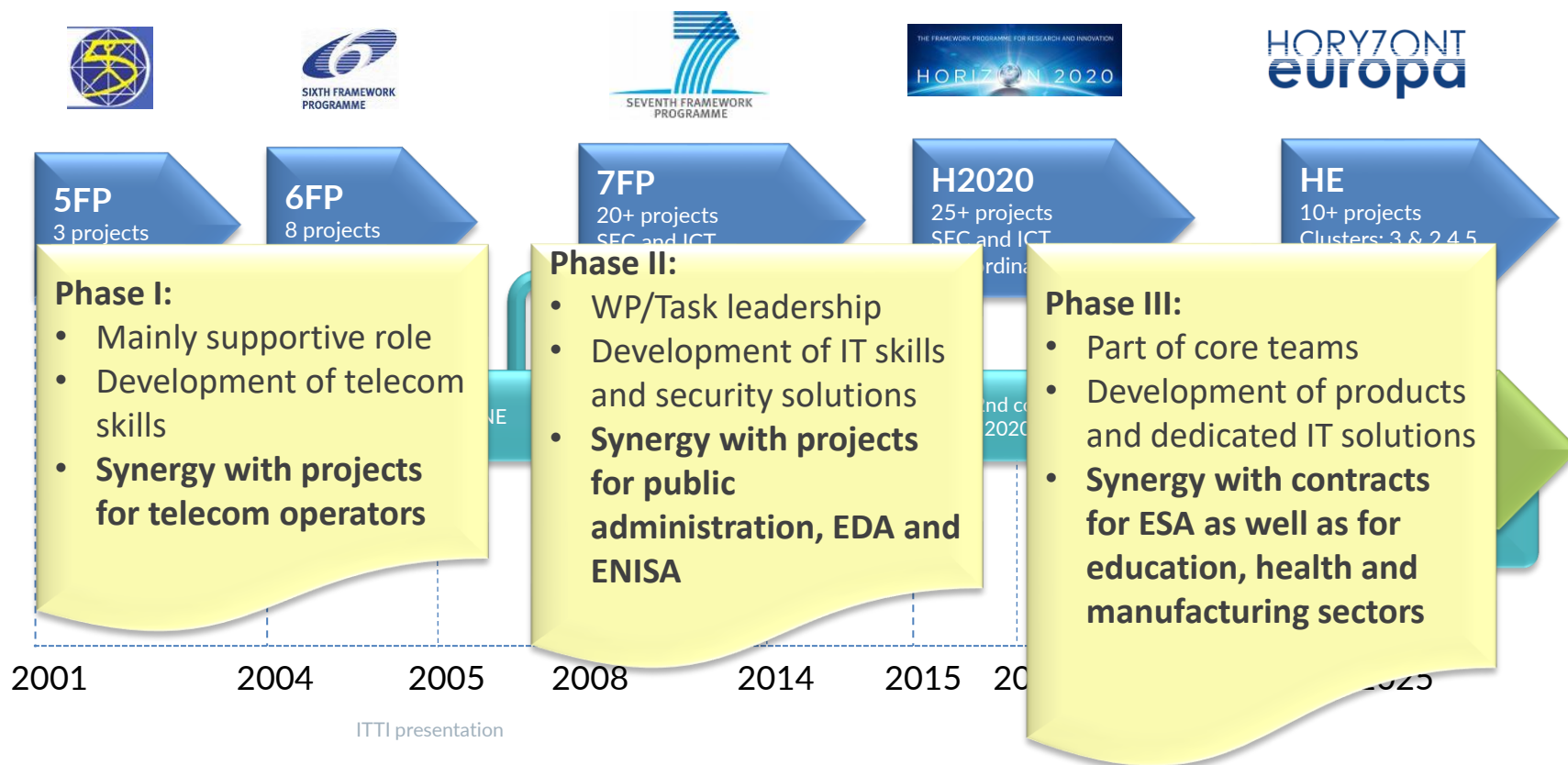
ITTI IN EC FP PROGRAMMES



ITTI IN EC FP PROGRAMMES



ITTI IN EC FP PROGRAMMES



EC PROJECTS COORDINATED BY ITTI



- FP7 CAMINO (CSA)
 - Comprehensive Approach to **cyber roadMap** coordINation and develOpment



- H2020 EU-SENSE (RIA)
 - European **Sensor System** for **CBRN** Applications



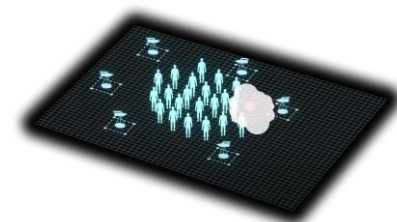
- H2020 EU-RADION (RIA)
 - European System for Improved **Radiological Hazard Detection** and Identification



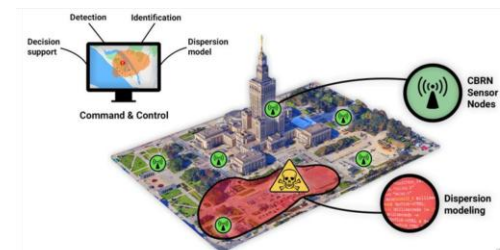
- HE CHIMERA (IA)
 - Comprehensive **Hazard Identification**, and Monitoring systEm for uRban Areas



- EDF RAPTOR (Research Action)
 - Remote weAPon condition-based **moniTORing System**



CBRN



FIRST INPUTS TO PANEL

- Contribution to EC R&D programmes gives excellent opportunity to **develop the company and its employees**
- It helped our company in the **transformation** from technical consultants to software house
- At least **mid-term approach** is needed
- **Openness for collaboration** is very appreciated





— **THANK YOU FOR YOUR ATTENTION**

Krzysztof Samp, krzysztof.samp@itti.com.pl

itti

ITTI Sp. z o.o
www.itti.com.pl

ul. Rubież 46
61-612 Poznań

Tel. (61) 622 69 85
Fax. (61) 622 69 73